

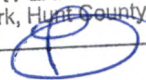
17,217



2000 I-30 E
Greenville, TX 75402

FILED FOR RECORD
at 12:30 o'clock P.M.

JAN 11 2022

BECKY LANDRUM
County Clerk, Hunt County, Tex.
By 

Monday, December 20, 2021

Office of Hunt County Commissioners
PO BOX 1097
Greenville TX 75403

Farmers Electric Cooperative Member: ROBERT ARMSTRONG
Service Order Number: 2021122366

Greetings:

Farmers Electric Cooperative, Inc. is requesting permission to construct electrical power distribution facilities which will cross County Road 3512 which is located 3014 ft N of FM 2101 in Hunt County, Texas.

Site location map and construction sketches are enclosed. The construction sketch details the proposed work. All road crossings will have a minimum vertical clearance of 22 feet.

If you have any questions, please contact me at any time.

Sincerely,

Cody Bland

Project Coordinator
cbland@farmerselectric.coop
Phone 903-456-1722

Submitted by Psalm Harper
pharper@farmerselectric.coop
Field Engineering Coordinator

Enclosures

County Approval Section:

Approved: Denied:

Authorized Signature: 

Date: 1-11-22

14.4KV

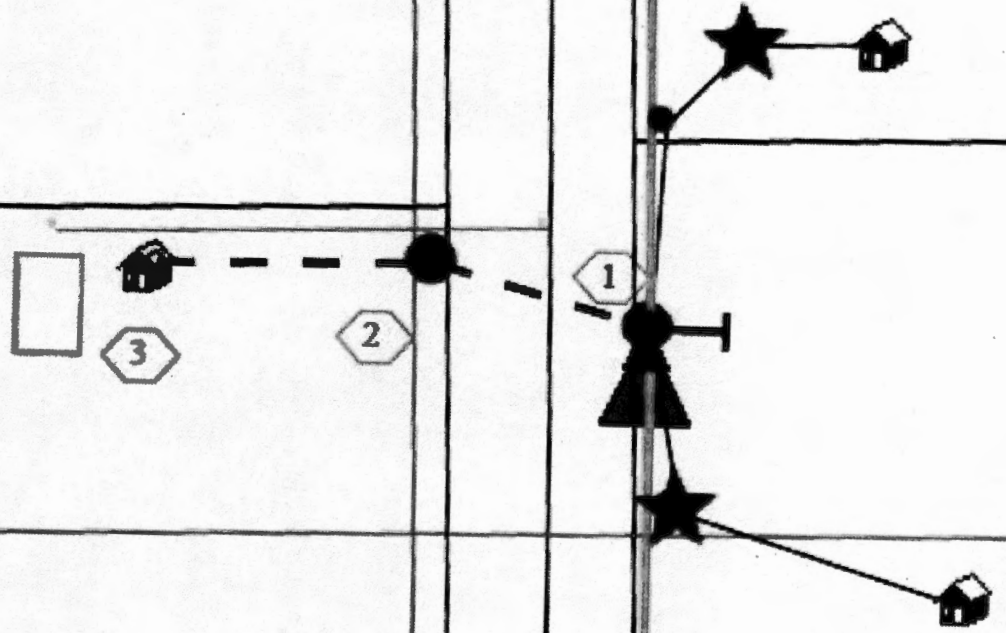


CR 3512

32060360064

Block
Lot 51

Block
Lot 52



150ft

crossing cr 3512 at pole 026307 which
is 3014 ft n of fm 2101

026310

CR 3512

75374

100726

SOUTH CENTRAL SERVICE AREA

026312